

## SampleScan 96 2D Reader System

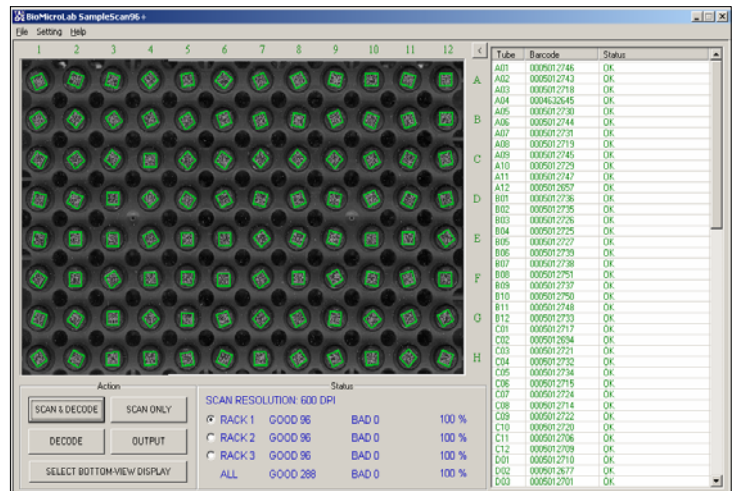
### SampleScan 96 2D Reader



- Scans one rack in less than 20 seconds
- Single rack or multi-rack formats
- Decodes all SBS formats
- Footprint: 11 3/4" X 18 1/2" X 3 1/2"
- LIMS software integration friendly

### SampleScan 96 Software

- Rescan or manually edit barcode data
- Customizable software for a variety of rack formats
- Data output files are user defined and customizable - .csv format
- ActiveX Software Developer's Tool Kit available for robotic and LIMS system integration projects



Easy-to-use software

[www.biomicrolab.com](http://www.biomicrolab.com)

BioMicroLab, Inc.  
2500-A Dean Leshner Drive  
Concord, CA 94520  
USA

Tel: 925-689-1200  
Fax: 925-689-1263  
Email: [info@biomicrolab.com](mailto:info@biomicrolab.com)  
Web: [www.biomicrolab.com](http://www.biomicrolab.com)



### SampleScan 96 2D Scanner

The 2D marked sample tubes feature a 2D grid barcode located on the bottom of the tube. This provides a unique ID number for each sample tube. The SampleScan 96 2D scanner identifies and decodes the 2D mark on the tube. The SampleScan 96 scanner technology allows reporting the tube location and rack ID to LIMS systems.

---

## SampleScan 96 Specifications:

### Performance

- Scans and decodes one rack in less than 20 seconds
- Scans and decodes three racks in less than 45 seconds
- Rescan or manually edit 2D barcode data
- Output file .csv format
- User-defined output file data



### Labware compatibility

- ThermoFisher (Matrix, ABgene, and Nunc)
- Micronic
- FluidX
- Matrical
- Handles a wide variety of 2D barcoded labware in SBS formats 12, 24, 48, and 96 well

### Operating Requirements

- Electrical: 100-240VAC ~ 50/60Hz
- Environment: 50° to 95° F (10° to 35° C)
- Universal power supply with US, UK, Euro or user specified



### PC System Requirements

- Windows 2K/XP, 1GB RAM
- Two USB ports

### SampleScan 96 Instrument Options

- SampleScan 96 ActiveX Tool Kit is used by software engineers to integrate the SampleScan 96 output directly to a LIMS database or for integration with other laboratory robotics

### Machine Specifications

- Weight: 6 lbs (2.7kg)
- Shipping Weight: 11 lbs (5kg)
- Dimensions:
  - Depth 18.5" (469.9mm)
  - Width 11.75" (298.45mm)
  - Tall 3.5" (88.9mm)

[www.biomicrolab.com](http://www.biomicrolab.com)

BioMicroLab, Inc.  
2500-A Dean Leshner Drive  
Concord, CA 94520  
USA

Tel: 925-689-1200  
Fax: 925-689-1263  
Email: [info@biomicrolab.com](mailto:info@biomicrolab.com)  
Web: [www.biomicrolab.com](http://www.biomicrolab.com)