

SampleScan Mini 2D Reader System

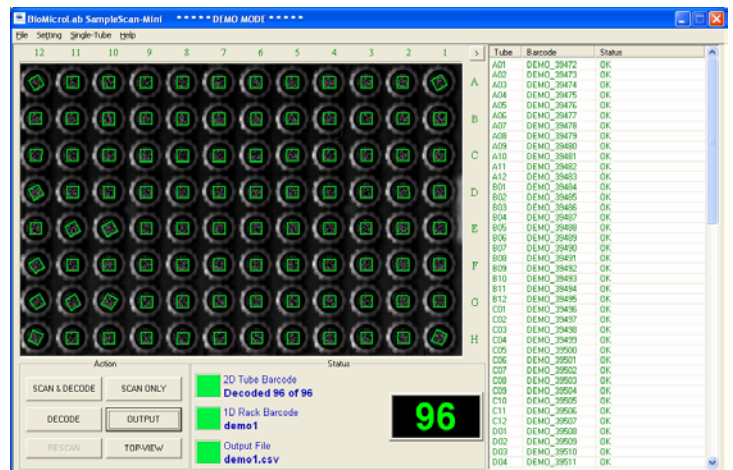


SampleScan Mini with 1D Reader Integration

- Scans one rack in 5 seconds
- Includes integrated 1D Reader
- One touch button initiates scan and output
- Mounting bracket attaches on three sides
- Single tube scan/decode feature
- Decodes all SBS formats
- Smallest footprint: 10 1/2" x 7 3/4" x 1 1/2"

SampleScan Mini Software

- Fully automated scanning and output file generation via one-touch button
- Software allows automated or non-automated operation
- Auto-Rescan increases decoding throughput
- Data output - .csv format
- ActiveX Software Developer's Tool Kit available for robotic and LIMS system integration projects



Easy-to-use software interface

www.biomicrolab.com

BioMicroLab, Inc.
2500-A Dean Leshner Drive
Concord, CA 94520
USA

Tel: 925-689-1200
Fax: 925-689-1263
Email: info@biomicrolab.com
Web: www.biomicrolab.com



SampleScan Mini 2D Scanner

The 2D marked sample tubes feature a 2D grid barcode located on the bottom of the tube. This provides a unique ID number for each sample tube. The SampleScan Mini 2D scanner identifies and decodes the 2D mark on the tube. The SampleScan Mini scanner technology allows reporting the tube location and rack ID to LIMS systems.

SampleScan Mini Specifications:

Performance

- Scans and decodes one rack in less than five seconds
- Integrated 1D barcode reader captures rack ID
- Automatically generates output file
- On screen error handling prompts
- Auto-rescan feature improves decoding results
- Single tube scan feature
- Operates in fully automated or manual modes



Labware compatibility

- Matrix, ABgene, Nunc, Micronic, and FluidX

Operating Requirements

- Electrical: 100-240VAC ~ 50/60Hz, 1.2A
- Environment: 42° to 95° F (5° to 35° C)
- MS-2 1D reader uses USB connection
- Universal power supply with US, UK, Euro or user specified



PC System Requirements

- Windows 2K/XP/Vista/Window 7
- Three USB ports (Scanner, Button, MS-2 Reader)

SampleScan Mini Instrument Options

- SampleScan Mini ActiveX Tool Kit used to integrate the SampleScan Mini output directly to LIMS database systems or other laboratory robotics.

Machine Specifications

Weight	5lbs	2.27kg
Shipping Weight	10lbs	4.54kg
Dimensions		
Depth	10 1/2"	266.7mm
Width	7 3/4"	196.9mm
1D Bracket alone	2 1/2 X 4 3/4"	63.5 X 120.6mm
Tall (no 1D Bracket)	1 7/8"	47.6mm
Tall (with 1D Bracket)	4"	101.6mm

www.biomicrolab.com

BioMicroLab, Inc.
 2500-A Dean Lesher Drive
 Concord, CA 94520
 USA

Tel: 925-689-1200
 Fax: 925-689-1263
 Email: info@biomicrolab.com
 Web: www.biomicrolab.com