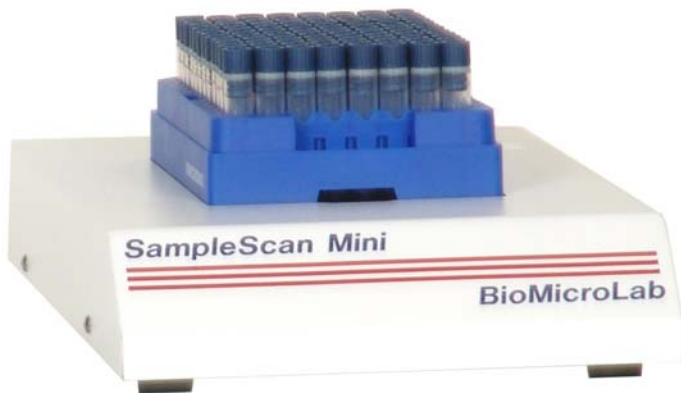


SampleScan Mini 2D Reader System

Model Number: BML-SSMINI

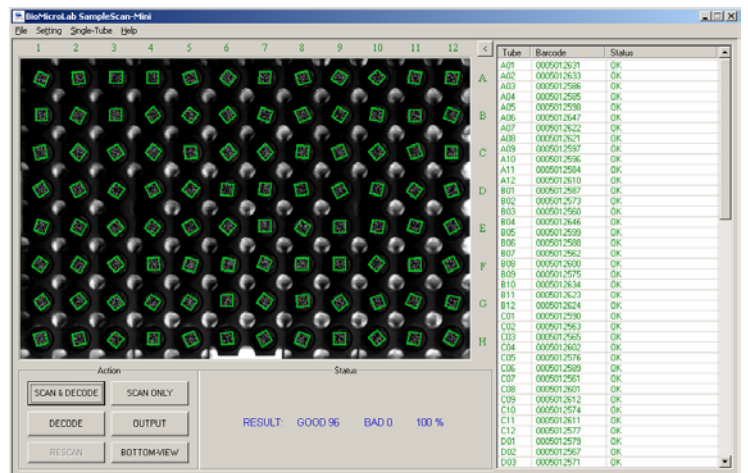


SampleScan Mini 2D Reader

- Scans one rack in 5 seconds
- Single tube scan/decode feature
- Decodes all SBS formats
- Smallest footprint: 10 ½" x 6 ¼" x 1 ½"
- Integration friendly design

SampleScan Mini Software

- Manually edit barcode decoding
- Auto-Rescan increases decoding throughput
- Data output files are user defined and customizable - .csv format
- ActiveX Software Developer's Tool Kit available for robotic and LIMS system integration projects



Easy-to-use software interface

www.biomicrolab.com

BioMicroLab, Inc.
2500-A Dean Leshner Drive
Concord, CA 94520
USA

Tel: 925-689-1200
Fax: 925-689-1263
Email: info@biomicrolab.com
Web: www.biomicrolab.com



SampleScan Mini 2D Scanner

The 2D marked sample tubes feature a 2D grid barcode located on the bottom of the tube. This provides a unique ID number for each sample tube. The SampleScan Mini 2D scanner identifies and decodes the 2D mark on the tube. The SampleScan Mini scanner technology allows reporting the tube location and rack ID to LIMS systems.

SampleScan Mini Specifications:

Performance

- Scans and decodes one rack in less than five seconds
- Auto-rescan feature improves decoding results
- Single tube scan feature
- Manual edit of 2D barcode data

Labware compatibility

- ThermoFisher (Matrix, ABgene, and Nunc)
- Micronic
- FluidX

Operating Requirements

- Electrical: 100-240VAC ~ 50/60Hz, 1.2A
- Environment: 42° to 95° F (5° to 35° C)
- Universal power supply with US, UK, Euro or user specified

PC System Requirements

- Windows XP/Vista/Windows 7
- One USB port

SampleScan Mini Instrument Options

- SampleScan Mini ActiveX Tool Kit used to integrate the SampleScan Mini output directly to LIMS database systems or other laboratory robotics.



Machine Specifications

- Weight: 3.55 lbs (1.6kg)
- Shipping Weight: 7 lbs (3.17kg)
- Dimensions:
 - Depth 10 1/2" (266.7mm)
 - Width 6 1/4" (158.75mm)
 - Tall 1 1/2" (38.1mm)

www.biomicrolab.com

BioMicroLab, Inc.
2500-A Dean Lesher Drive
Concord, CA 94520
USA

Tel: 925-689-1200
Fax: 925-689-1263
Email: info@biomicrolab.com
Web: www.biomicrolab.com